

## SH-CR1 CONVEYOR SERIES

THE DISHWASHER DELIVERING HIGH CAPACITY



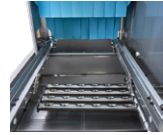
### POWER

SUPERIOR washing results. Sustained pressure powered by ABB motor with IP55 rating. Stainless steel built bolt-on impeller housing.



### ENDURANCE

Stainless steel chamber construct. Fully built from industrial grade 304 stainless steel including drain pipe. Enduring performance with ZERO-TROUBLE experience.



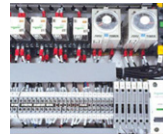
### SINGLE

Equipped with SINGLE standard wash tank conveyor system. Handles sustained load and water temperature at 225 racks an hour.



### DURABILITY

Electromechanical components such as Schneider contactors and Parker solenoid valves proved to be DURABLE, reducing significant maintenance downtime and EASILY SOURCED locally.



### CONVERTIBLE

Directional feed CONVERTIBLE on-site, without the need for any additional parts or components.

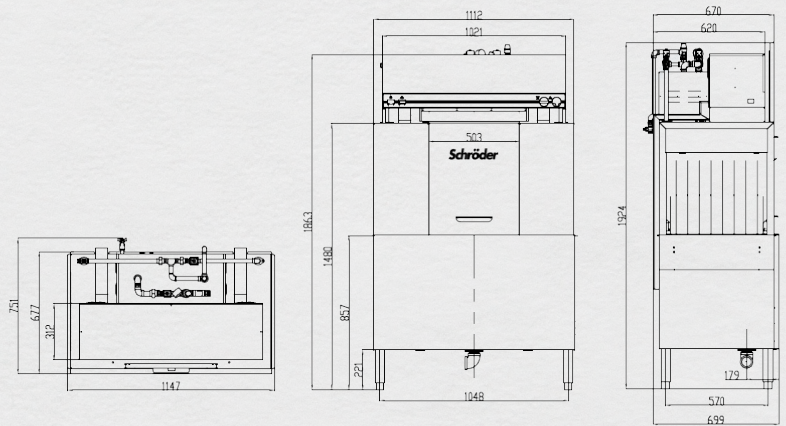


## TECHNICAL DATA

<b>Model:</b>	SH-CR1
<b>Dimensions (mm):</b>	1147 (W) x 751 (D) x 1924 (H)
<b>Loading height (mm):</b>	450
<b>Rack type (mm):</b>	500 x 500
<b>Machine net weight</b>	247 kg

### OPERATING INFORMATION

<b>Wash temperature:</b>	55°C - 65°C
<b>Rinse temperature:</b>	82°C - 90°C
<b>Wash rate (per hour):</b>	225 racks, 6075 6" plates
<b>Rinse usage:</b>	<1.0 liter(s) per rack
<b>Wash tank capacity:</b>	83.0 liters
<b>Booster tank capacity:</b>	21.0 liters
<b>Heating mode:</b>	Available in Electric or Steam
<b>Chemical dispensers:</b>	G-Star L dispenser (sold separately)
<b>Exhaust hood:</b>	Optional fitting (sold separately)



### ELECTRICAL SPECIFICATIONS

Voltage supply	Booster tank	Wash tank	Wash pump	Conveyor motor	Total power loading
380V - 415V, 50/60Hz, 3 Phase	36.0 kW	9.0 kW	1.5 kW	0.2 kW	<b>39.0 kW, 55.0 A (Alternative Heating)</b>
			ABB motor		48.0 kW, 67.0 A (Full Heating)
220V - 240V, 60Hz, 3 Phase	36.0 kW	9.0 kW	1.5 kW	0.2 kW	<b>39.0 kW, 105.0 A (Alternative Heating)</b>
			ABB motor		48.0 kW, 140.0 A (Full Heating)