

A Higher Level of Performance



Data Sheet

Sultan

Acoustic Wave Series

Level, Flow, Positioning, Collision Protection



For more information, please visit >
www.hawkmeasurement.com

Overview

Sultan Acoustic Wave Series



Principle of Operation

The SULTAN 234 emits a high powered Acoustic Wave transmit pulse which is reflected from the surface of the material being measured. The reflected signal is processed using specially developed software to enhance the correct signal and reject false or spurious echoes.

The transmission of high powered Acoustic Waves ensures minimal losses through the environment where the sensor is located. Due to the high powered emitted pulse, any losses have far less effect than would be experienced by traditional ultrasonic devices. More energy is transmitted hence more energy is returned. Advanced receiver circuitry is designed to identify and monitor low level return signals even when noise levels are high. The measured signal is temperature compensated to provide maximum accuracy to the outputs and display.

Function

The Sultan 234 is a non intrusive Acoustic Wave transmitter with flexibility, used for measuring level of liquids, slurries and solids.

Universal Supply

- 2 Wire Loop Powered
- 3 Wire DC
- 4 Wire AC / DC
- PoE (Power over Ethernet)

Certifications

ATEX, IECEx, CSA, CE.

Primary Areas of Application

- Dirty / dusty / build up prone applications
- Self Cleaning sensor face requires no maintenance.
- **Water / Wastewater:**
River Level, Wet Wells, Inlet Screens, Tanks, Sumps, Pump Stations, Water Towers, Dams, Basin Levels, Chemical Storage.
- **Mining:**
Crushers, Surge Bins, Ore Passes, Conveyor Profile, Blocked Chute, Stockpile, Stackers, Reclaimers, Storage Silos, etc.
- **Power Stations:**
Boiler Bunkers, Raw Coal Bunkers, Ash Pits, Fly Ash Silos, etc.
- **Others:**
Food, Cement, Plastics, Grain, Chemicals, Paper, Irrigation, Quarries.

Features

- Non contact measurement
- High Power even with two wire loop supply
- Low cost per point
- Wide range of communications: GosHawk, HART, Modbus, Profibus PA, Profibus DP, Foundation Fieldbus, DeviceNet, Modbus over Ethernet TCP/IP, Wi Fi, PoE, Bluetooth
- Pump Control x5 pumps
- Auto compensation for dust, steam and losses
- Protection class IP67, NEMA 4x (IP68 Transducer)
- Programmable fail safe mode
- 3G remote setup options / configuration
- Differential and average level control (2 transducers).

Typical Applications

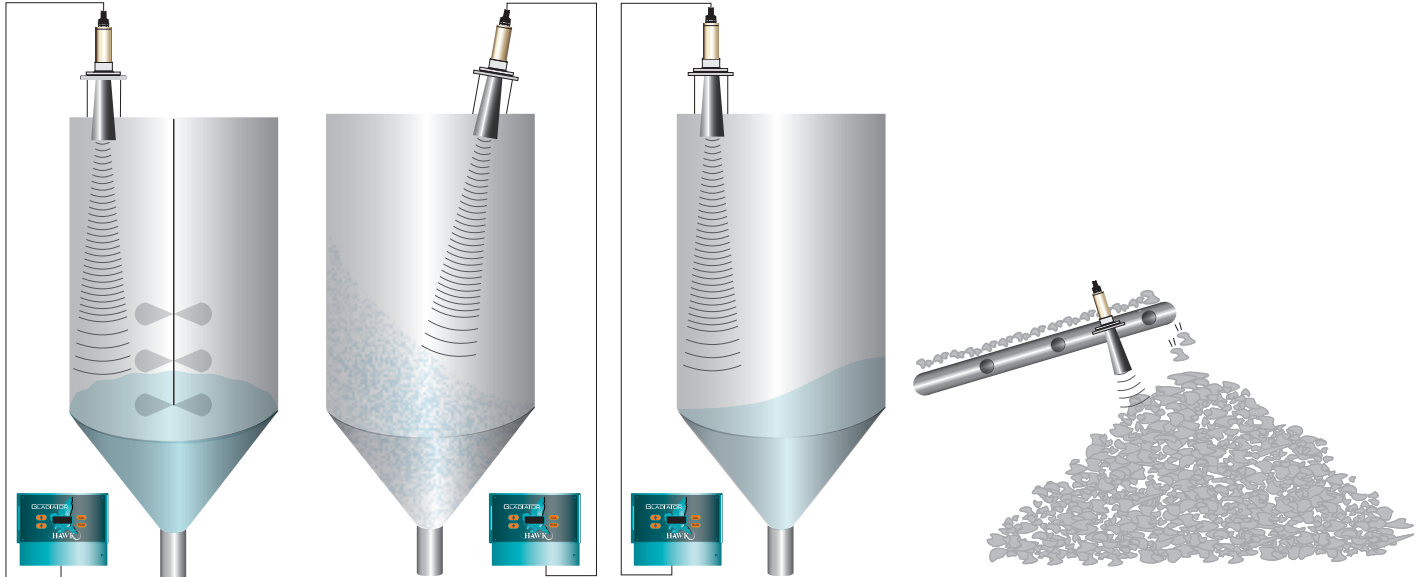
Sultan Acoustic Wave Series



Conical Shape Vessels

Horizontal Cylindrical / Tanks

Stockpiles, Stackers, Reclaimers



Solids Vessels

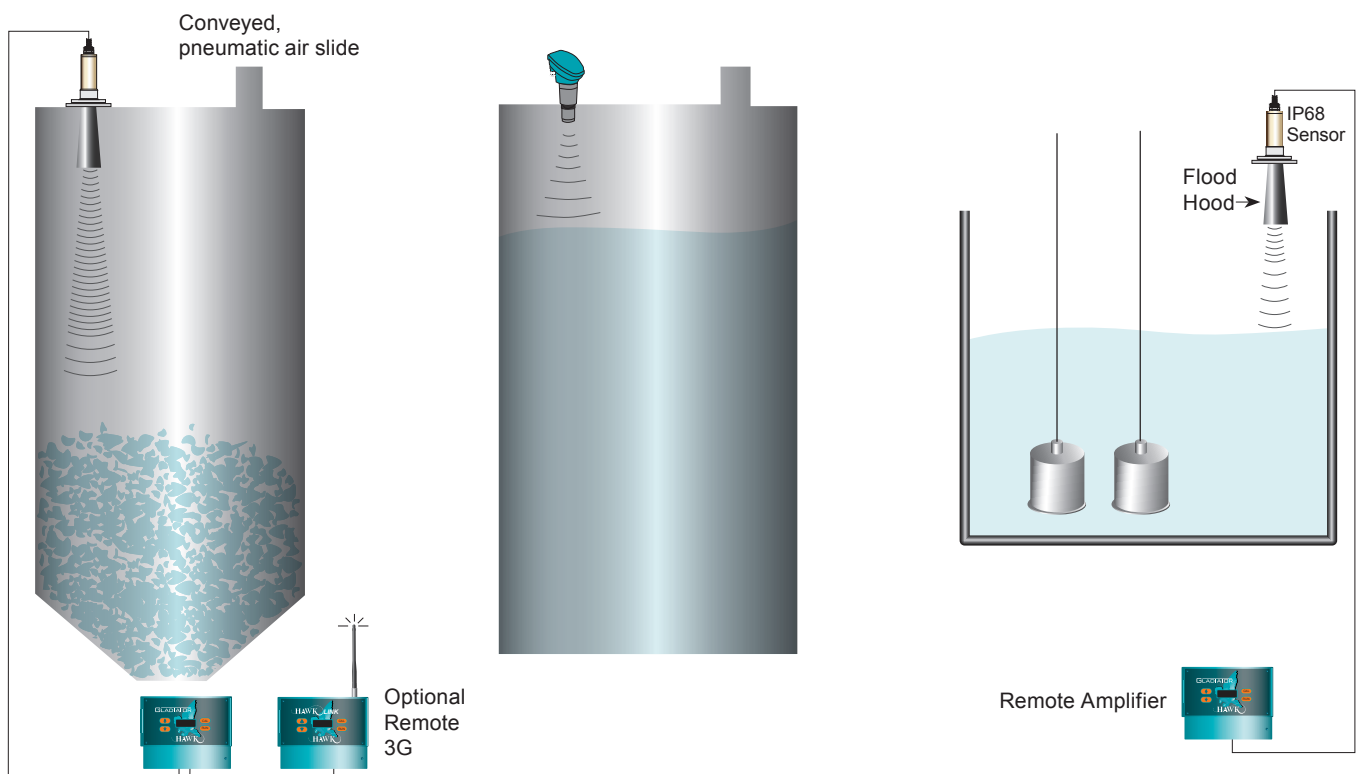
Storage Tanks

Sewage Wet Well

High / Low / Continuous level
(Granular / Powder)

High / Low / Continuous level
(Liquid / Chemical)

High / Low / Continuous level
Up to 5 Pumps



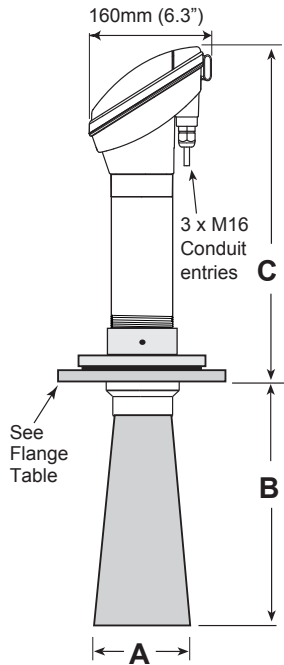
Dimensions

Sultan Acoustic Wave Series

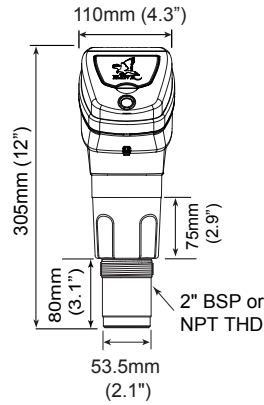


Integral Units

Standard Type

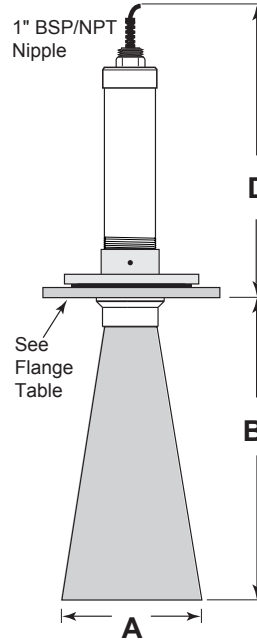


Compact Type (2" BSP / NPT)

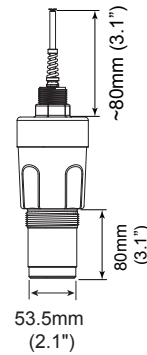


Remote Transducers

Standard Type



Compact Type (2" BSP / NPT)

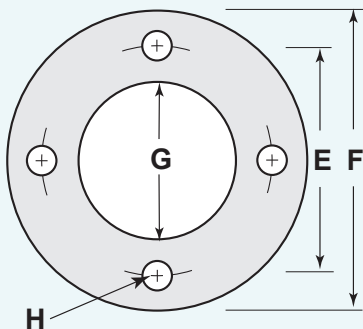


All cones must protrude into the main volume of the vessel by at least 50 mm (2 inches) past the lower end of the mounting nozzle.

Cone / Transducer Dimensions Table

Sensor Frequency	Selected Flange	A		B		C		D	
		mm	in.	mm	in.	mm	in.	mm	in.
5 kHz	10"	236	10.0	455	17.9	840	33.1	750	29.5
	8"	195	8.0	280	11.1	540	21.3	450	17.7
10 kHz	10"	236	10.0	455	17.9	540	21.3	450	17.7
	8"	195	8.0	280	11.1	540	21.3	450	17.7
15 kHz	10"	236	10.0	455	17.9	440	17.3	350	13.8
	8"	195	8.0	280	11.0	440	17.3	350	13.8
20 / 30 kHz	4"	98.5	4.0	280	11.0	390	15.4	300	11.8
30 / 40 / 50 kHz	4"	98.5	4.0	280	11.0	350	3.8	260	10.2

Flanges



FLANGE TYPE:

- A = ANSI Flange
- J = JIS Flange
- D = DIN Flange

Standard ANSI/DN/JIS Flange Dimensions

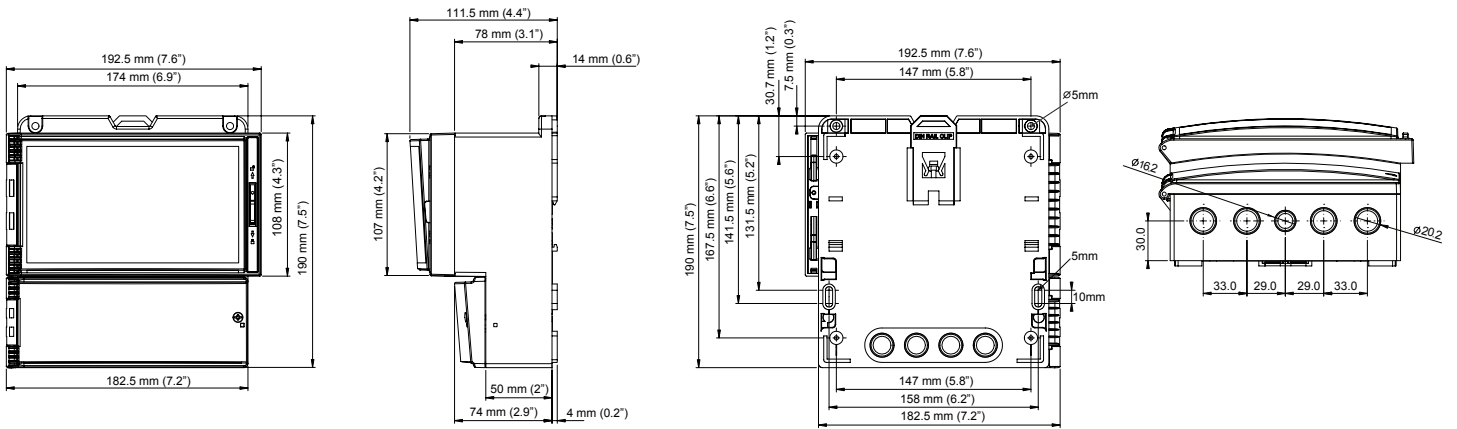
Size	Flange Type	E (PCD)		F (OD)		G (ID)		H (Hole)		No. Holes
		mm	in.	mm	in.	mm	in.	mm	in.	
4"	FA4 ANSI class 150	190.5	7.5	229	9.0	100	4	19	0.75	8
	FD4 DIN100 PN10/16	180	7.1	220	8.7	100	4	18	0.71	8
	FJ4 JIS B2220-1984 10kg	175	6.9	210	8.4	100	4	19	0.75	8
6"	FA6 ANSI class 150	241.5	9.5	279	11.0	150	6	22	0.87	8
	FD6 DIN150 PN10	240	9.4	285	11.2	150	6	23	0.91	8
	FJ6 JIS B2220-1984 10kg	240	9.4	280	11.0	150	6	23	0.91	8
8"	FA8 ANSI class 150	298.5	11.8	343	13.5	200	8	22	0.85	8
	FD8 DIN200 PN10	295	11.6	340	13.4	200	8	22	0.85	8
	FJ8 JIS B2220-1984 10kg	290	11.4	330	13.0	200	8	19	0.91	12
10"	FA10 ANSI class 150	362	14.3	406	16.0	250	10	25	1.02	12
	FD10 DIN200 PN10	350	13.7	395	16.0	250	10	23	0.85	12
	FJ10 JIS B2220-1984 10kg	355	14.0	400	15.7	250	10	25	0.99	12

Dimensions & Wiring Diagrams

Sultan Acoustic Wave Series



Remote Amplifier



AWR Remote Transmitter

AWR234

RELAY 1			RELAY 2			RELAY 3			RELAY 4			RELAY 5		
NC	COM	NO	NC	COM	NO	NC	COM	NO	NC	COM	NO	NC	COM	NO
<input type="checkbox"/>	<input type="checkbox"/>	<input type="checkbox"/>	<input type="checkbox"/>	<input type="checkbox"/>	<input type="checkbox"/>	<input type="checkbox"/>	<input type="checkbox"/>	<input type="checkbox"/>	<input type="checkbox"/>	<input type="checkbox"/>	<input type="checkbox"/>	<input type="checkbox"/>	<input type="checkbox"/>	<input type="checkbox"/>
16	17	18	19	20	21	22	23	24	25	26	27	28	29	30
<input type="checkbox"/>	<input type="checkbox"/>	<input type="checkbox"/>	<input type="checkbox"/>	<input type="checkbox"/>	<input type="checkbox"/>	<input type="checkbox"/>	<input type="checkbox"/>	<input type="checkbox"/>	<input type="checkbox"/>	<input type="checkbox"/>	<input type="checkbox"/>	<input type="checkbox"/>	<input type="checkbox"/>	<input type="checkbox"/>
1	2	3	4	5	6	7	8	9	10	11	12	13	14	15
Is	+	-	RED	BLACK	BLUE	WHITE	Test In	B	A	-	+	⊕	N	L1
4-20mA			TRANSDUCER				COMMS	DC-In				AC-In*		

Sinking 4-20mA from user device
OR
Sourcing 4-20mA from Sultan

*AC-In is replaced by 36-60VDC with Power Input Option 'C'.

AWR2

Test In	COMMS	Shld	Shld
⊕	B	A	
<input type="checkbox"/>	<input type="checkbox"/>	<input type="checkbox"/>	<input type="checkbox"/>
7	8	9	10
<input type="checkbox"/>	<input type="checkbox"/>	<input type="checkbox"/>	<input type="checkbox"/>
1	2	3	4
RED	BLACK	BLUE	WHITE
TRANSDUCER			
	+	-	
	4-20mA		

Sinking 4-20mA from user device

AWI Integral Transmitter

AWI234

RELAY 1			COMMS			RELAY 2		
NC	COM	NO	A	B	Shld	NC	COM	NO
<input type="checkbox"/>	<input type="checkbox"/>	<input type="checkbox"/>	<input type="checkbox"/>	<input type="checkbox"/>	<input type="checkbox"/>	<input type="checkbox"/>	<input type="checkbox"/>	<input type="checkbox"/>
16	17	18	19	20	21	22	23	24
<input type="checkbox"/>	<input type="checkbox"/>	<input type="checkbox"/>	<input type="checkbox"/>	<input type="checkbox"/>	<input type="checkbox"/>	<input type="checkbox"/>	<input type="checkbox"/>	<input type="checkbox"/>
1	2	3	4	5	6	7	8	9
L1	N	⊕	-	+	Is	Test In	-	+
AC-In			4-20mA			DC-In		

Sinking 4-20mA from user device
OR
Sourcing 4-20mA from Sultan

AWI234

With Comms Option 'B' (Bluetooth)

RELAY 1			Test In	RELAY 2			
NC	COM	NO	⊕	NC	COM	NO	
<input type="checkbox"/>	<input type="checkbox"/>	<input type="checkbox"/>	<input type="checkbox"/>	<input type="checkbox"/>	<input type="checkbox"/>	<input type="checkbox"/>	
16	17	18	19	20	21	22	
<input type="checkbox"/>	<input type="checkbox"/>	<input type="checkbox"/>	<input type="checkbox"/>	<input type="checkbox"/>	<input type="checkbox"/>	<input type="checkbox"/>	
1	2	3	4	5	6	7	
A	B	Shld	-	+	Is	-	+
COMMS			4-20mA			DC-In	

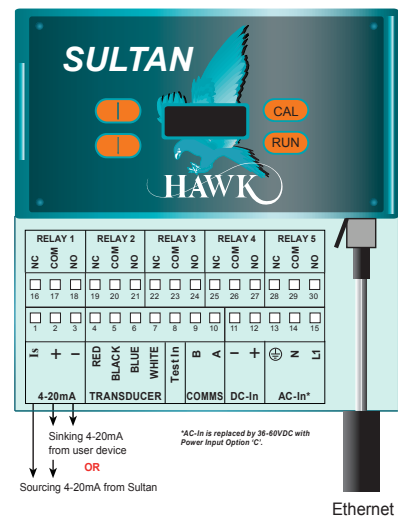
Sinking 4-20mA from user device
OR
Sourcing 4-20mA from Sultan

AWI2

COMMS		
A	B	Shld
<input type="checkbox"/>	<input type="checkbox"/>	<input type="checkbox"/>
1	2	3
-	+	Test In
4-20mA		

Sinking 4-20mA from user device

AWR Remote Unit With Ethernet



Sinking 4-20mA from user device
OR
Sourcing 4-20mA from Sultan

*AC-In is replaced by 36-60VDC with Power Input Option 'C'.

Ethernet



Sultan Remote Transmitter

Model

AWR2 Remote 2 Wire, No relays, 12-30VDC only, Modbus

AWR234 Remote 2 / 3 / 4 Wire, 5 relays, Modbus

Housing

S Polycarbonate

Power Supply

B 12-30VDC

C¹ 36-60VDC

U¹ 12-30VDC and 90-260VAC

Additional Communications

S¹ No additional communication (5 relays & Modbus only)

X 4-20mA analogue

H² 4-20mA analogue with HART 2 wire

I¹ 4-20mA analogue with HART Isolated 4 wire

A Profibus PA

P¹ Profibus DP

F Foundation Fieldbus

D¹ DeviceNet

E¹ 4-20mA with Modbus over Ethernet TCP/IP

R¹ 4-20mA with Modbus over Wi Fi

B¹ 4-20mA with Bluetooth

C^{1,4} 4-20ma with Modbus and PoE (Power over Ethernet)

This option is no longer available

X Option no longer available

Approval Standard

X Not Required

i0³ IECEx Zone 0 Ex ia IIA T4 IP67 Tamb -20°C to 70°C

A0³ ATEX Grp II Cat 1 GD IP67 EEx ia IIA T4

i20³ IECEx Zone 20 DIP A20 TA85C IP68 Tamb -20°C to 75°C

A20³ ATEX Grp II Cat 1 D T85°C IP67 Tamb -20°C to 75°C

A22 ATEX Grp II Cat 3 GD T85°C IP67 Tamb -40°C to 70°C

GP⁴ CSA Equip Class 2; Pollution deg 2; Tamb -20°C to 75°C (Ordinary Locations)

RN^{3,4} CSA Class I; Div 1/2; Group D; Zone 0; AEx / Ex ia IIA; T4

Position Slave / Crane Master

X Not Required

PS¹ Position Slave

CM¹ Crane Master

AWR234 S U X X X X

¹ Model AWR234 only

² Model AWR2 only

³ Model AWR2 only. Communication Option W, X, H only

⁴ Power supply option 'B' only



Sultan Remote Transducer 3" and 3.5"

Model

AWRT Acoustic Wave Remote Transducer

Transducer Frequency

- 30 30kHz for applications up to 15m for 3" (Cone required¹)
- 20 20kHz for applications up to 20m, 3" only (Cone required¹)
- 15 15kHz for applications up to 30m, 3" only (Cone required¹)
- 10 10kHz for applications up to 40m, 3.5" only (Cone required¹)
- 09 9kHz Positioning / Position Slave applications up to 180m (Cone required¹)
- 05 5kHz for applications up to 60m, 3.5" only (Cone required¹)
- 04 4kHz Positioning / Position Slave applications up to 180m (Cone required¹)

Process Temperature - Facing material selection

S² Polyolefin 80°C (176°F)

T³ Teflon 80°C (176°F)

Transducer Housing Material

- 4 Polypropylene

Back Cap Mounting Thread Standards

X Not Required (Standard Flange Mount)

TB BSP

Back Cap Mounting Thread Sizes

X Not Required (Standard Flange Mount)

30⁵ 3" BSP

50⁶ 3.5" BSP

Approval Standard

X Not Required

i2A IECEx Zone 20/21 Ex ta/tb IIIC T85C Da/Db Tamb -20°C to 62°C (back cap options 'X' only)

i2B IECEx Zone 21 Ex tb IIIC T85C Db Tamb -20°C to 62°C

i2C IECEx Zone 21/- Ex tb/- IIIC T85C Db/- Tamb -20°C to 62°C

A2A ATEX Grp II Cat 1/2 D Ex ta/tb IIIC T85°C Da/Db Tamb -20°C to 62°C (back cap options 'X' only)

A2B ATEX Grp II Cat 2 D Ex tb IIIC T85°C Db Tamb -20°C to 62°C

A2C ATEX Grp II Cat 2/- D Ex tb/- IIIC T85°C Db/- Tamb -20°C to 62°C

i0 IECEx Zone 0 Ex ia IIA T4 IP67 Tamb -20°C to 70°C

A0 ATEX Grp II Cat 1 GD IP67 EEx ia IIA T4

i1 IECEx Zone 1 Ex mb II IP68 T5(Tamb -20°C to 65°C) T6(Tamb -20°C to 50°C)

A1 ATEX Grp II Cat 2 GD EEx m II IP68 T5(Tamb -20°C to 65°C) T6(Tamb -20°C to 50°C)

i20 IECEx Zone 20 DIP A20 TA85C IP68 Tamb -20°C to 75°C

A20 ATEX Grp II Cat 1 D T85°C IP67 Tamb -20°C to 75°C

A22 ATEX Dust (Grp II Cat 3 D T85C IP67)

GP CSA Equip Class 2; Pollution deg 2; Tamb -20°C to 75°C (Ordinary Locations)

RN CSA Class I; Div 1/2; Group D; Zone 0; AEx / Ex ia IIA; T4

KN CSA Class II; Div 2; Group F&G; Class III; T6 T85 for Tamb -20°C to 75°C

QN CSA Class II; Div 1; Group E, F&G; Ex mb II; T5(T100) for Tamb -20°C to 65°C; T6(T85) for Tamb -20°C to 50°C

Connection

C IP68 Sealed unit with cable and 1" BSP connection

CN IP68 Sealed unit with cable and 1" NPT connection

Cable Length

6 6m cable

15 15m cable

30 30m cable

50 50m cable

Mounting Accessories

X Not Required

CS⁷ End Cap Cable Suspension

Software Options

X Not Required

FP⁷ Fast Pulsing

PS Position Slave (Requires Position Slave Amplifier)

¹ See Transducer / Cone / Flange combination table

² Transducer Frequency 04, 05, 09, 10 only

³ Transducer Frequency 10, 15, 20, 30 only

⁴ Transducer Frequency 15 only

⁵ Transducer Frequency 15, 20, 30 only

⁶ Transducer Frequency 04, 05, 09, 10

⁷ Transducer Frequency 30, 20 only

AWRT 10 T 4 X X X C 6 X X



Sultan Remote Transducer 2"

Model

AWRT Acoustic Wave Remote Transducer

Transducer Frequency

- 50 50kHz for liquid applications up to 5m (Cone required¹)
- 40 40kHz for liquid applications up to 7m (Cone required¹)
- 30 30kHz for liquid applications up to 11m (Cone required¹)

Process Temperature - Facing material selection

- T Tefzel 80°C (176°F)

Transducer Housing Material

- 6 Tefzel

Thread Standard

- TB BSP
- TN NPT

Thread Size

- 20 2" thread

Approval Standard

- X Not Required
- i0 IECEx Zone 0 Ex ia IIA T4 IP67 Tamb -20°C to 70°C
- A0 ATEX Grp II Cat 1 GD IP67 EEx ia IIA T4
- i1 IECEx Zone 1 Ex mb II IP68 T5(Tamb -20°C to 65°C) T6(Tamb -20°C to 50°C)
- A1 ATEX Grp II Cat 2 GD EEx m II IP68 T5(Tamb -20°C to 65°C) T6 (Tamb -20°C to 50°C)
- i20 IECEx Zone 20 DIP A20 TA85C IP68 Tamb -20°C to 75°C
- A20 ATEX Grp II Cat 1 D T85°C IP67 Tamb -20°C to 75°C
- A22 ATEX Grp II Cat 3 GD T85°C IP67 Tamb -40°C to 70°C
- GP CSA Equip Class 2; Pollution deg 2; Tamb -20°C to 75°C (Ordinary Locations)
- RN CSA Class I; Div 1/2; Group D; Zone 0; AEx/Ex ia IIA; T4
- KN CSA Class II; Div 2; Group F&G; Class III; T6 T85 for Tamb -20°C to 75°C
- QN CSA Class II; Div 1; Group E, F&G; Ex mb II; T5(T100) for Tamb -20°C to 65°C; T6(T85) for Tamb -20°C to 50°C

Connection

- C IP68 Sealed unit with cable

Cable Length

- 6 6m cable
- 15 15m cable
- 30 30m cable
- 50 50m cable

Mounting Accessories

- X Not Required
- CS Cable Suspension on end cap

Software Options

- X Not Required

AWRT 30 T 6 TB 20 X C 6 X X

¹ See 'Transducer / Cone / Flange combination table



Sultan Integral 3" and 3.5"

Model

- AWI2 Integral 2 Wire, No relays, Modbus
- AWI234 Integral 2 / 3 / 4 Wire, 2 relays, Modbus

Housing

- S Valox 357U

Power Supply

- B 12-30VDC
- U¹ 12-30VDC and 90-260VAC

Transducer Frequency

- 30 30kHz for applications up to 11m for 2" and 15m for 3" (Cone required⁶)
- 20 20kHz for applications up to 20m, available in 3" only (Cone required⁶)
- 15 15kHz for applications up to 30m, available in 3" only (Cone required⁶)
- 10 10kHz for applications up to 40m, available in 3.5" only (Cone required⁶)
- 09 9kHz for Positioning / Position Slave applications up to 180m (Cone required⁶)
- 05 5kHz for applications up to 60m, available in 3.5" only (Cone required⁶)
- 04 4kHz for Positioning / Position Slave applications up to 180m (Cone required⁶)

Process Temperature - Facing material selection

- S² Polyolefin 80°C (176°F)
- T³ Teflon 80°C (176°F)

Transducer Housing Material

- 4 Polypropylene

This option is no longer available

- X Option no longer available

This option is no longer available

- X Option no longer available

Additional Communication

- S¹ No additional communications (2 relays, Modbus)
- X 4-20mA analogue
- H⁵ 4-20mA analogue with HART 2 wire
- I¹ 4-20mA analogue with HART Isolated 4 wire
- A Profibus PA
- F Foundation Fieldbus
- E¹ 4-20mA with Modbus over Ethernet TCP/IP
- R¹ 4-20mA with Modbus over Wi Fi
- B^{1,7} 4-20mA with Bluetooth
- C^{1,7} 4-20mA with Modbus and PoE (Power over Ethernet)

Approval Standard

- X Not Required
- i2C IECEx Zone 21/- Ex tb/- IIIC T85C Db/- Tamb -20°C to 62°C
- A2C ATEX Grp II Cat 2/- D Ex tb/- IIIC T85°C Db/- Tamb -20°C to 62°C
- i0⁵ IECEx Zone 0 Ex ia IIA T4 IP67 Tamb -20°C to 70°C
- A0⁵ ATEX Grp II Cat 1 GD IP67 EEx ia IIA T4
- i20⁵ IECEx Zone 20 DIP A20 TA85C IP68 Tamb -20°C to 75°C
- A20⁵ ATEX Grp II Cat 1 D T85°C IP67 Tamb -20°C to 75°C
- A22 ATEX Grp II Cat 3 GD T85°C IP67 Tamb -40°C to 70°C

Software Options

- X Not Required

AWI234 S U 10 S 4 X X X X X

¹ Model AWI234 only

² Transducer Frequency 04, 05, 09, 10 only

³ Transducer Frequency 10, 15, 20, 30 only

⁴ Transducer Frequency 15 only

⁵ Model AWI2 only. Communication Option W, X, H only

⁶ See Transducer / Cone / Flange combination table

⁷ Power Supply option 'B' only



Sultan Integral 2"

Model

- AWI2 Integral 2 Wire, No relays, 12-30VDC only, Modbus
- AWI234 Integral 2 / 3 / 4 Wire, 2 relays, Modbus

Housing

- S Valox 357U

Power Supply

- B 12-30VDC
- U¹ 12-30VDC and 90-260VAC

Transducer Frequency

- 50 50kHz for liquid applications up to 5m (Cone required⁶)
- 40 40kHz for liquid applications up to 7m (Cone required⁶)
- 30 30kHz for liquid applications up to 11m (Cone required⁶)

Process Temperature - Facing material selection

- T Tefzel 80°C (176°F)

Transducer Housing Material

- 6 Tefzel

Thread Standards

- TB BSP
- TN NPT

Mounting Thread Sizes

- 20 2" thread

Additional Communication

- S¹ No additional communications (2 relays, Modbus)
- X 4-20mA analogue
- H² 4-20mA analogue with HART 2 wire
- I¹ 4-20mA analogue with HART Isolated 4 wire
- A Profibus PA
- F Foundation Fieldbus
- E¹ 4-20mA with Modbus over Ethernet TCP/IP
- R¹ 4-20mA with Modbus over Wi Fi
- B^{1,7} 4-20mA with Bluetooth
- C^{1,7} 4-20mA with Modbus and PoE (Power over Ethernet)

Approval Standard

- X Not Required
- i0³ IECEx Zone 0 Ex ia IIA T4 IP67 Tamb -20°C to 70°C
- A0³ ATEX Grp II Cat 1 GD IP67 EEx ia IIA T4
- i20³ IECEx Zone 20 DIP A20 TA85C IP68 Tamb -20°C to 75°C
- A20³ ATEX Grp II Cat 1 D T85°C IP67 Tamb -20°C to 75°C
- A22 ATEX Grp II Cat 3 GD T85°C IP67 Tamb -40°C to 70°C

Software Options

- X Not Required

¹ Model AWI234 only

² Model AWI2 only

³ Model AWI2 only. Communication Option W, X, H only

⁶ See Transducer / Cone / Flange combination table

⁷ Power Supply option 'B' only

AWI234 S U 40 T 6 TB 20 X X X

Part Numbering

Sultan Acoustic Wave Series



Flange Selection

F Flange

Dimension Standard

- A ANSI²
- D DN²
- J JIS²

Flange Sizes

- 2N Matches 2" NPT threaded units
- 2B Matches 2" BSP threaded units
- 3 3" acoustically isolated flange
- 4 4" acoustically isolated flange
- 6 6" acoustically isolated flange
- 8 8" acoustically isolated flange
- 10 10" acoustically isolated flange

Flange Mounting Position¹

- A Cone Mounted (standard)
- C Angled flange piece only

Flange Material

- 4 Polypropylene

F A 4 A - 4

Additional Flange Options¹

- FA8A-4-C4** 8" ANSI, polypropylene **FA8D50-4** 6" ANSI, polypropylene
- FA10A-4-C4** 10" ANSI, polypropylene **FA10D50-4** 6" ANSI, polypropylene
- FA6D50-4** 6" ANSI, polypropylene

¹ Important: See Transducer / Cone / Flange combination table for valid part combinations

² See 'Flange Dimension Standards' table for full Flange specification

Cone Selection

C Focaliser Cone

Cone Type¹

- 02N C04 cone for 2" NPT transducer
- 02B C04 cone for 2" BSP transducer
- 04 4" cone for 20kHz and 3" 30kHz transducers
- 08-15 8" cone for 15kHz
- 08-10 8" cone for 10kHz
- 10-15 10" cone for 15kHz
- 10-10 10" cone for 10kHz and 9Hz
- 10-05 10" cone for 5kHz and 4kHz

Cone Material

- 4 Polypropylene
- 7A Carbon Fibre. Includes matching ANSI Flange (4", 8" or 10")
- 7D Carbon Fibre. Includes matching DN Flange (4", 8" or 10")
- 7J Carbon Fibre. Includes matching JIS Flange (4", 8" or 10")
- 8 Polyurethane

C 04 - 4

Additional Cone Options¹

- C04-4-ZOD90** C04-4 trimmed to fit 90mm ID nozzle.
- C03-4-Z** Cone and coupling to fit 72mm ID nozzle for 20kHz and 30kHz (T4).

Aiming Flange Kits

F Flange

Dimension Standard

- A ANSI
- D DN
- J JIS

Flange Sizes

- 4 4" / DN100
- 6 6" / DN150
- 10 10" / DN 200

Flange Type

- R Aiming Flange

Flange Material

- 4 Polypropylene

Matching Focaliser Cone / Transducer

C04	4" cone for 15/20kHz and 3" 30kHz	Cone not included
C08-15	8" cone for 15kHz	
C08-10	8" cone for 10kHz	
C10-15	10" cone for 15kHz	Cone is pre-fitted to Flange kit
C10-10	10" cone for 10kHz and 9Hz	
C10-05	10" cone for 5kHz and 4kHz	

Cone Material

- 4 Polypropylene
- 8 Polyurethane

F A 10 R - 4 - C10-10 - 8

Part Numbering

Sultan Acoustic Wave Series



Accessories

HAWKLink Data Modem

Model

HLR Remote stand alone HAWKLink system

Power Supply

B 12-30VDC

U 12-30VDC and 90-260VAC

Network Type

G4 4G

Sim Card

S3 Australian Sim Card expires after 3 month

S12 Australian Sim Card expires after 12 month

X Not Required

HLR U G3 S3

HAWKLink USB PC connector for GosHawkII

HAWKLink-USB

Stainless Steel Sunhood

SUNHOOD

Junction Box for twin Transducer applications or cable extension

AWRT-JB-01

AWRT-JB-06 (includes 6m cable)

Extra Cable (Belden 3084A)

CA-TXCC-R-C15 15m cable

CA-TXCC-R-C30 30m cable

CA-TXCC-R-C50 50m cable

CA-TXCC-R-C100 100m cable

Transducer / Cone / Flange Combination Table

- Each line represents fitting combinations. Flange Dimension Standard A, D or J replaces underscore (_) position

Transducer	Cone	Flange Option 1	Flange Option 2	Flange Option 3	Flange Option 4
50 / 40kHz	C02	F_3A	F_4A		
30kHz (T6)	C02	F_3A	F_4A		
30kHz (T4)	C03-4-Z	F_3A			
	C04	F_3A	F_4A	F_6A	F_8A-4-C4
Back Cap Mount (TB30)		F_4A	FA6A		
20kHz	C03-4-Z	F_3A			
	C04	F_3A	F_4A	F_6A	F_8A-4-C4
Back Cap Mount (TB30)		F_4A	F_6A		
15kHz	C04	F_4A	F_6A		
	C08	F_8A	F_10A	F_6D50-4	
	C10	F_8A	F_10A	F_6D50-4	
Back Cap Mount (TB30)		F_4A	F_6A		
9 / 10kHz	C08	F_8A	F_10A	F_6D50-4	
	C10	F_8A	F_10A	F_6D50-4	
Back Cap Mount (TB50)		F_6D50-4	F_8D50-4	F_10D50-4	
4 / 5kHz	C08	F_8A	F_10A	F_6D50-4	
	C10	F_8A	F_10A	F_6D50-4	
Back Cap Mount (TB50)		F_6D50-4	F_8D50-4	F_10D50-4	

Not Recommended

Specifications

Sultan Acoustic Wave Series



Frequency

- 4kHz, 5kHz, 9kHz, 10kHz, 15kHz, 20kHz, 30kHz, 40kHz, 50kHz (4kHz & 9kHz are special long range versions).

Operating Voltage

- 12 - 30VDC (residual ripple no greater than 100mV)
- 90 - 265VAC 50 / 60Hz
- 12-30VDC & 36-60VDC
- 37 - 57VDC (PoE)

Power Consumption

- <10VA @ 240VAC • <3W @ 24VDC
- <6W @ 48VDC

Analogue Output

- 4 -20mA
- Recommended 250 ohms with 24VDC supply, max. 750 ohms.

Communications

- GosHawk, HART, Modbus (RS485), Profibus PA, Profibus DP, DeviceNet, Foundation Fieldbus, Modbus over Ethernet TCP/IP / Wi Fi / PoE / Bluetooth
- Multidrop Modbus mode can address 1 - 250 units over 4 wires.

Relay Output: (2) Integral (5) Remote

- Form 'C' (SPDT) contacts, rated 0.5A at 240VAC non-inductive
- All relays have independently adjustable dead bands
- Remote failsafe test facility for one relay.

Blanking Distance

- 50kHz: 0.25m (10") • 40kHz: 0.30m (12")
- 30kHz: 0.35m (14") • 20kHz: 0.45m (17")
- 15kHz: 0.60 m (24") • 10 / 9kHz: 1.0 m (39")
- 5 / 4kHz: 1.5 m (59")

Maximum Range

- 5m (16ft) 50kHz liquids
- 7m (22ft) 40kHz liquids
- 11m (33ft) 30kHz liquids
- 20m (65ft) 20kHz liquids / slurries, 10m (33ft) solids
- 30m (98ft) 15kHz liquids / slurries, 20m (65ft) solids
- 60m (165ft) 10kHz liquids / slurries, 40m (165ft) powders / solids
- 60m (196ft) 5kHz liquids / slurries / powders / solids
- 180m (588ft) 4 / 9kHz for extended range positioning applications

Resolution

- 1mm (0.04") 50, 40, 30,20, 15, 10, 5kHz • 4mm (0.2") 9, 4kHz.

Sensor Accuracy

- +/- 0.25% of measured range.

Operating Temperature

- Integral System -40°C (-40°F) to 80°C (176°F)
- Remote Electronics -40°C (-40°F) to 80°C (176°F)
- Remote Transducer -40°C (-40°F) to 80°C (176°F).

Transducer / Amplifier Separation

- Up to 1000m using specified extension cable.

Hawk Measurement Systems (Head Office)

15 - 17 Maurice Court
Nunawading VIC 3131, AUSTRALIA
Phone: +61 3 9873 4750
Fax: +61 3 9873 4538
info@hawk.com.au

For more information and global representatives: www.hawkmeasurement.com

Additional product warranty and application guarantees upon request.
Technical data subject to change without notice.

Cable

- 4 conductor shielded twisted pair instrument cable
- Conductor size dependent on cable length
- BELDEN 3084A, DEKORON or equivalent
- Max: BELDEN 3084A = 500m (1640 ft)
- Max: DEKORON IED183AA002 = 350m (980 ft).

Maximum Operating Pressure

- +/- 7.5 PSI (+/- 0.5 Bar).

Beam Angle

- 7.5° without focaliser 50kHz / 40kHz / 30kHz
- 4° with focaliser 50kHz / 40kHz
- 6° with focaliser 30kHz / 20kHz / 15kHz / 10kHz / 5kHz
- 10° with focaliser 9kHz / 4kHz

Display

- 2 line x 12 digit alphanumeric LCD.

Memory

- Non-Volatile (No backup battery required)
- >10 years data retention.

Enclosure Sealing

- Integral System IP67 • Remote Transducer IP68.
- Remote Electronics: Rated IP65 (NEMA 4x). Designed for and tested to pass IP66 hose and IP67 submergence standards

Cable Entries

- Integral: 3 x M16 Glands • Remote: 3 x 20mm, 1 x 16mm knock outs.

Mounting

- ANSI, JIS or DIN Flange • 4 in / 100mm to 10 in / 250mm
- 2 in BSP Thread / NPT Thread.

Typical Weight

Sultan System with appropriate flange and cone

Frequency	kg	lb
4 or 5kHz Transducer	13	28.6
9 or 10kHz Transducer	10	22.0
15kHz Transducer	8	17.6
20 or 30kHz (3") Transducer	3	6.6
30, 40 or 50kHz (2") Transducer	1	2.2

Configuration

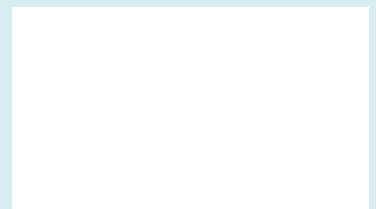
Configuration	kg	lb
Remote Amplifier with 6m cable	1	2.2
Remote Amplifier with 15m cable	3	6.6
Remote Amplifier with 30m cable	6	13.2
Remote Amplifier with 50m cable	10	22.0

Wi-Fi Specifications

- Wireless Standard: 802.11 b/g/n
- Frequency Range: 2.412GHz-2.484GHz
- Security: WEP/WPA-PSK/WPA2-PSK
- Encryption: WEP64/WEP128/TKIP/AES
- Certificate: FCC/CE

IMPORTANT
"USE SPECIFIED
CABLE ONLY"

Represented by:



Hawk Measurement

5010 Gateway Drive, Medina, OH 44256, USA
Phone: +1 888 HAWKLEVEL (1-888-429-5538)
Phone: +1 978 304 3000 / +1 877-356-5463
Fax: +1 978 304 1462 / +1 330-331-7172
info@hawkmeasurement.com