

EGB: B系列低噪音  
外嚙合齒輪泵  
B Series Low noise  
External Gear Pump



■ EGB-19-R

## 特性

- 加大軸心與軸鍵的設計, 大幅提高使用壓力, 運轉時低噪音。
- 特殊鋼製成之齒輪, 經精密加工後, 使齒輪接觸面獲得高精細的表面粗糙度, 符合高精度與高壓力產品的要求。
- 體積小, 節省空間, 適用於儀器及小型化精密機械。
- 本體鋁合金材質重力鑄造, 材質輕、高強度、高密度、耐高壓。
- 齒輪泵內的襯套, 具有高荷重與低磨擦係數之特性, 降低軸心磨耗增加產品壽命。
- DEGB採用雙排齒輪設計, 減少輸出脈動、降低噪音。

## 應用

適用於裁斷機械、板金機械產業、折彎機產業、升降系統設備、各類壓機產業。

## FEATURE

- Enlarged shaft and shaft key design, which increases the working pressure and lowers noise during operation.
- Gears are made of special steel that are precisely machined so that the gear contact surface possesses high-precision surface roughness, which meets the requirements of high-pressure products.
- Compact size and space saving, suitable for instruments and miniature precision machinery.
- Aluminum alloy, gravity casting housing high strength and high density, to ensure the body shape and pump stability.
- The bushing in the gear pump has the characteristics of high load and low coefficient of friction, which reduces shaft wear and increases product life.
- DEGB adopts a double-gear design to reduce output pulsation and noise.

## APPLICATION

Suitable for low flow and high-pressure machinery such as cutting machinery, sheet metal machinery industry, bending machine industry, press industry, etc.

## 形式編碼 MODEL CODE

EGB 6.2 R



## 技術資料 TECHNICAL DATA

型式 Model	泵流量 (無負荷時) Delivery At No Load (c.c./rev)	最高壓力 MAX. Pressure (bar)	容許迴轉速 Shaft Speed Range (rpm)		重量 Weight (kg)	出入油口尺寸 IN/OUTLET Dimension(mm)	
			Min.	Max.		入口 Inlet	出口 Outlet
EGB-6	6.2	210	600	3500	2.6	1-1/16-12UN	7/8-14UN
EGB-8	8.4	210	600	3500	2.7	1-1/16-12UN	7/8-14UN
EGB-11	11	210	600	3500	2.8	1-1/16-12UN	7/8-14UN
EGB-14	14.3	210	600	3500	3.0	1-1/16-12UN	7/8-14UN
EGB-16	16.5	210	600	3500	3.1	1-1/16-12UN	7/8-14UN
EGB-19	19.5	210	600	3000	3.3	1-1/16-12UN	7/8-14UN
DEGB-22	22.7	210	600	2500	3.6	EGB轉接頭: 入口端3/4 PT, 出口端1/2 PT EGB Adapter: inlet 3/4 PT, outlet 1/2 PT	
DEGB-26	26.5	210	600	2300	3.8		

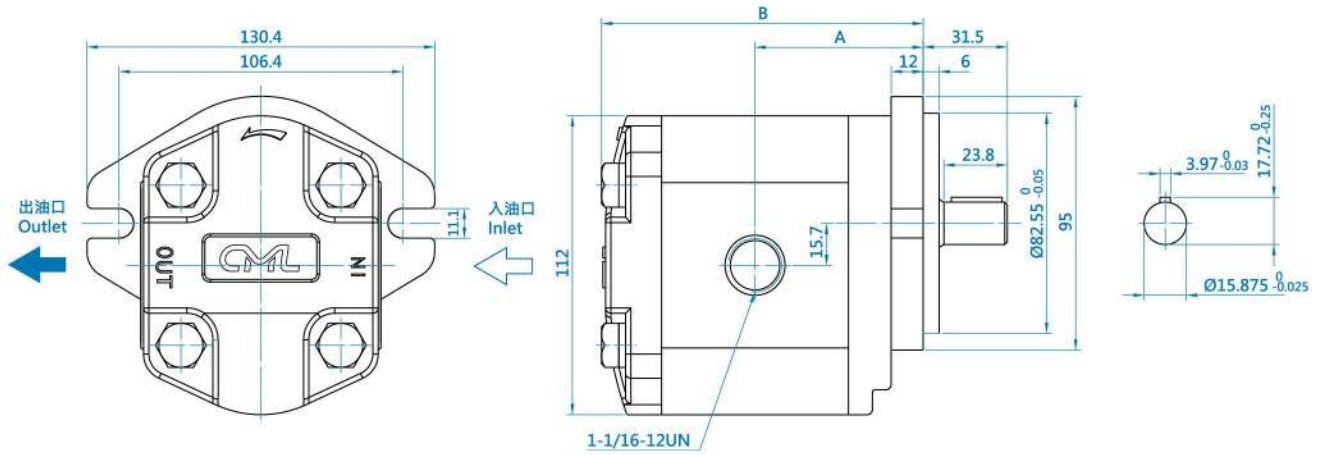
# 外型尺寸 MEASUREMENT

## EGB

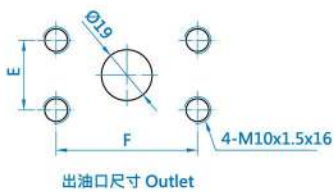


型號 Model	(mm)	
	A	B
EGB-6	54	101
EGB-8	56	105
EGB-11	58	109
EGB-14	61	115
EGB-16	63	119
EGB-19	65.5	122.4

單位Unit: mm



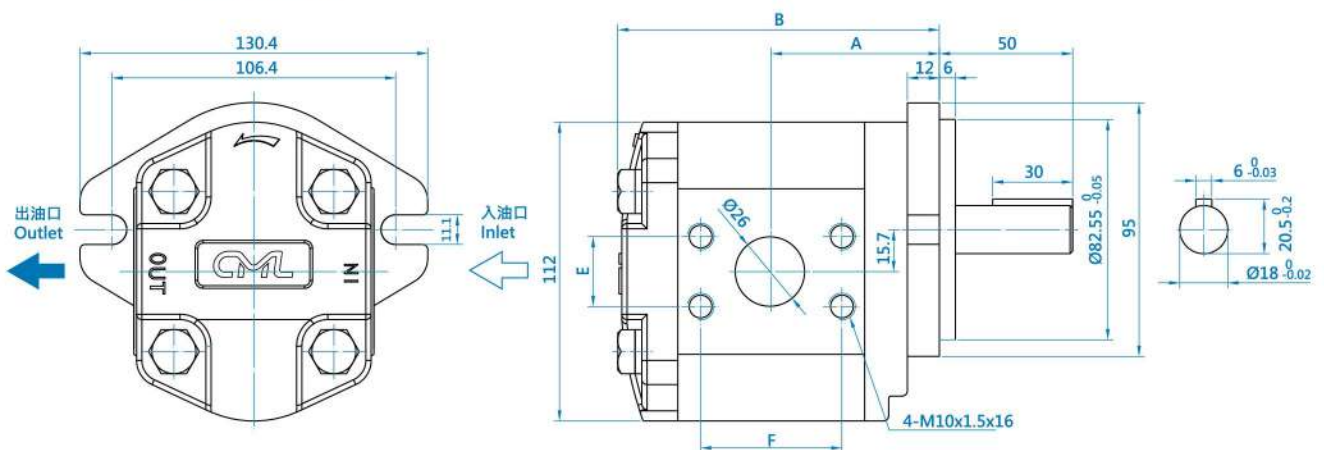
## DEGB



型號 Model	(mm)	
	A	B
DEGB-22	76	137
DEGB-26	81	142

尺寸 DIMENSION (mm)	$\varnothing 26$ 入油口 INLET	$\varnothing 19$ 出油口 OUTLET
E	26.2	22.2
F	52.4	47.6

單位Unit: mm



# 操作指南

## OPERATING INSTRUCTION

1. 安裝時須注意油泵與馬達的同心度，油泵的軸心不得承受任何的徑向或軸向壓力。
  2. 液壓油：  
請使用添加抗氧化劑之石油基液壓油，以避免氧化、腐蝕及氣泡產生。亦或可使用機油，建議使用礦物油黏度ISO 46~68。  
操作溫度範圍:15-70°C  
黏度:15cSt，啟動最大黏度:200cSt。
  3. 過濾在注油時應確保整個迴路清潔，並且須注意選用適當的濾油器，最好加裝油路阻塞感應器，並請依照濾油網規定按時更換。建議選用:吸入油口:100µm，回油口:25µm。
  4. 管路安裝須知
    - 禁止折彎迴路及阻塞迴路。
    - 最大吸入壓力0.8~1.3 bar。
    - 吸入口最大流速:0.5~1.5M/sec。
    - 排出口最大:3~8M/sec。
    - 回油最大流速:2~3M/sec。
  5. 驅動系統
    - 驅動軸上不能承受任何徑向及軸向之壓力。
    - 馬達及油泵的同心度必須仔細調整。
    - 請使用連軸器時以補償軸心之偏心量。
    - 安裝連軸器時必須避免產生軸向壓力，嚴禁使用敲擊或強壓方式安裝。
  6. 通則
    - 所有油泵在出廠前已做過性能及功能測試，任何企圖對油泵所做的修改，本公司不予任何保證。
    - 所有油泵維修僅限於本廠及經過授權之經銷商，任何非經授權之維修行為，本公司不予保證。
1. When installing, pay attention to the concentricity of the pump and motor. The pump shaft should not bear any axial or radial forces.
  2. Hydraulic fluid:  
Use a mineral based hydraulic oil with oxidation-resistant additive to avoid corrosion or foaming, or use engine oil ISO 46~68.  
Operating Temperature range: 15-70°C  
Viscosity: 15 cSt °  
Maximum viscosity during starting: 200 cSt °
  3. Filtration:  
Before filling the fluid, ensure that the oil circuit is perfectly clean. Filter must be adequate in capacity and preferably to use a blockage indicators. Filter must be changed periodically according to operating instructions. Recommended filtration density: Suction side 100 µm, Return side 25 µm.
  4. Piping Instruction:
    - Avoid sharp bends and blockages on the circuit.
    - Maximum inlet pressure: 0.8~1.3 bar
    - Maximum flow speed at suction side: 0.5~1.5M/sec
    - Maximum flow speed at outlet side: 3~8M/sec
    - Maximum flow speed at return side: 2~3M/sec
  5. Drive system:
    - No radial or axial forces may be permitted against the drive shaft.
    - The concentricity of motor and pump must be carefully adjusted.
    - Use a coupling for the compensation of eccentricity if possible.
    - When mounting a coupling, avoid applying axial force and never attempt to press or knock into place using a hammer or similar instrument.
  6. Notification:
    - All pumps supplied by Camel have been passed performance and function test before delivery. Any modification to the pump is not allowed and will be out of its warranty.
    - Maintenance must be performed by the manufacturer or authorized dealers. Warranty will not be supported for unauthorized repairs.