



**CARING
WITHOUT LIMITS**

AVer MD330UI

Medical Grade PTZ Camera 





AVer MD330UI is specially designed and medically certified for Telemedicine with the IEC 60601-1-2 Medical Certification. The 30X optical zoom lens with 4K output resolution delivers superb image quality. AI Noise Reduction offers a face-to-face communication experience for patients and doctors. A first in the industry, the detachable camera head makes 360-degree angle close-up shooting and snapshots possible. The MD330UI is available for infrared night view, delivering care 24/7.



30X Optical
Zoom



4K Output
Resolution



Speedy Focus



Wide Angle PTZ



Handheld
Camera Head



Short Working
Distance



One-Click
Pan-Tilt



One-Button
Snapshot



IR for Night View



Medical
Certifications

Revolutionary Detachable Head Design

The detachable camera head design is a true revolution in telemedicine – not only can the doctor make use of the motorized remote controlled PTZ functionality, the near-site medical assistant can also simply detach the camera from the base and easily give the doctor a clear view of any difficulties to capture area of interest.



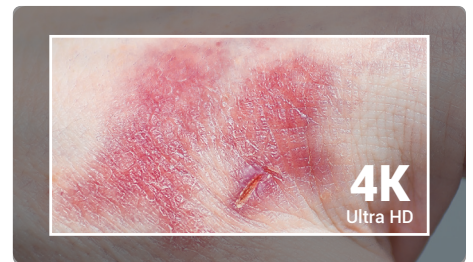
Unparalleled 30X Optical Zoom Capability

The 30X optical zoom lens picks up even the smallest of details for the doctor to precisely diagnose, thanks to a superior autofocus, zoom speed and speedy camera movements.



Outstanding 4K Resolution

The MD330UI delivers ultra-clear 4K resolution imagery of the patient to the doctor and works together with the excellent 30X optical zoom to allow doctors to make accurate remote diagnoses.



AI Acoustics

With an integrated speakerphone and microphone, the MD330UI is equipped with an all-in-one audio system. AVer's in-house AI Noise Deduction technology makes communication smooth and telemedicine sessions stress free.



Medical Grade Certification

The IEC 60601-1-2 medical certification not only ensures stability and safety of the MD330UI, but also guarantees the compatibility of other medical grade devices with the MD330UI.



Product Specifications

| Camera | | Speaker | |
|----------------------------|-------------------------------------------------------------------------------------------------------------------------|----------------------------------------------------------------------------------------------------------------------------------------------------------------------------------------------------------------------------|------------------------------------------------------------------------------------|
| Image Sensor | 1/2.8" 4K Exmor CMOS | Embedded Speaker | Yes |
| Effective Picture Elements | 8 Megapixels | SPL | 77 dB SPL (1W / 1m) |
| Output Resolutions | 4K/30 (IP/UVC), 1080p/60, 1080p/59.94, 1080p/50, 1080p/30, 1080p/29.97, 1080p/25, 720p/60, 720p/59.94, 720p/50, 720p/30 | Maximum SPL | 90 dB SPL at 0.5 m |
| | | Microphone | |
| | | Built-in Microphone | 2 (Omnidirectional) |
| Minimum Illumination | 0.7 lux (IRE50, F1.6, 30fps) | AI Noise Reduction | Yes |
| S/N Ratio | ≥ 50 dB | Pickup Range | 5 m |
| Gain | Auto, Manual | Sensitivity | -33 dBFS |
| Shutter Speed | 1/1 to 1/10,000 sec | Frequency Response | 20 Hz to 20 KHz |
| Exposure Control | Auto, Manual, Priority AE (Shutter, IRIS), BLC, WDR | Maximum SPL | 133 dB SPL at 0.5 m |
| White Balance | Auto, Manual | Loop Recording | |
| Optical Zoom | 30X | Resolution | Up to 4K |
| Viewing Angles | DFOV : 75.5° (Wide) to 3.1° (Tele) HFOV : 68.0° (Wide) to 2.7° (Tele) VFOV : 41.7° (Wide) to 1.5° (Tele) | Length of Video | 5 minutes |
| | | Recording Modes | Loop & continuous |
| | | Loop Mechanism | Wipe the oldest clip |
| Focal Length | f = 4.3 mm (Wide) to 129 mm (Tele) | IP Streaming | |
| Aperture (Iris) | F = 1.6 (Wide) to 4.7 (Tele) | Resolution | 4K 30fps |
| Minimum Working Distance | 0.01 m (Wide), 1.2 m (Tele) | Network Video Compress Formats | H.264, H.265 |
| Pan / Tilt Angles | Pan : ±170°, Tilt: +90° / -35° | Maximum Frame Rate | 4K 30fps |
| Pan / Tilt Speed (Manual) | Pan : 0.1° to 100° / sec, Tilt: 0.1° to 100° / sec | Network Interface | 10 / 100 / 1000 Base-T |
| Preset Speed | Pan : 200° / sec, Tilt: 200° / sec | Multi-Stream Capability | 2 (RTSP / Web Page), 4K 30fps (max.) |
| Preset Positions | 10 (IR), 256 (RS-232 / IP) | Network Protocols | IPv4, TCP, UDP, ARP, ICMP, IGMP, HTTP, DHCP, RTP / RTCP, RTSP, RTMP, VISCA over IP |
| Camera Control - Protocols | VISCA (RS-232 / IP), CGI (IP) | | |
| Image Processing | Noise Reduction (2D / 3D), Flip, Mirror, WDR, BLC | | |
| Power Frequencies | 50 Hz, 60 Hz | USB | |
| Interface | | Connector | USB 3.0 |
| Video Outputs | HDMI, IP, USB | Video Format | MJPEG、YUY2 |
| Audio Outputs | HDMI, IP, USB | Audio Format | PCM |
| General | | USB Video Class (UVC) | UVC 1.1 |
| Power Requirement | AC 100 - 240V to DC 12V / 3.34A | USB Audio Class (UAC) | UAC 1.0 |
| Power Consumption | 36W | Software Tools | |
| Dimensions (W x H x D) | 168 x 205 x 126 mm | IP Search and Configuration Tool | Support Windows® 7 or later |
| Net Weight | 1.95 kg | Warranty | |
| Application | Indoor | Camera | 3 Years |
| Tally Lamp | N / A | Accessories | 1 Year |
| Security | Kensington Slot | Package Contents | |
| Remote Control | Infrared | Camera, Remote Control, Power Adapter, Power Cord, 1/4"-20, L=7.5mm (x2), USB 3.0 Type-B to A Cable (1.5m), On-camera Lens Cable** (Standard cable, 180 cm), Lens Cable** (Standard short cable, 45 cm), Quick Start Guide | |
| Operating Conditions | Temperature : 0 °C to +35 °C; Humidity : 20% to 80% | | |
| Storage Conditions | Temperature : -20 °C to +60 °C; Humidity : 20% to 95% | | |

* Specifications may vary depending on location and are subject to change without notice.

Product Appearance

Front



1. Detachable Camera Head
2. Speaker
3. Microphone Array
4. LED Indicator
5. Mode Switch Button

Back



1. RJ45
2. USB 3.0 Type-B
3. HDMI
4. USB Type-A
5. microSD Card Slot
6. RS-232
7. DC 12V
8. Kensington Slot

Detachable Camera Head



1. Snapshot Button



©2024 AVer Information Inc. All rights reserved.
All brand names and logos are trademarks of their respective companies.



Distributor/Dealer